

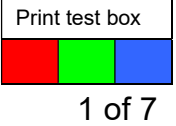
Amphenol

PROCESS INSTRUCTION

Number: 123GB-0845

Issue: 8

Page:



Products are sold subject to Amphenol's conditions of sale ("the standard conditions"). All specifications and statements contained herein are believed to be correct at the time a printing, but no representation or warranty, express or implied is, given as to any specification or statement contained herein. Product specifications including performance characteristics are typical only and subject to deviation. Specifications are also subject to change without notice. Users should not assume that all safety measures are indicated or that measures may not be required. No representation or warranty, express or implied, is given that any use of products (including any stated or suggested use) does not infringe any patent, registered design or other third party rights and no stated or suggested use of products can be taken to recommend any such infringement.

**** FOLLOW ALL LOCAL HEALTH AND SAFETY POLICIES ****

123GB-0845 'Rhino Torque Setting'

Key Points with reference to this assembly.

1. This document details all torque values for Rhino Product Range.
2. Unless specified on deviation drawing, please adhere to standard process (tightening method / torque value).
3. Dependant on the environmental conditions and the application the connectors will be subjected to, there may be a necessity to apply an appropriate thread lock adhesive before fitting locking ring to the rear of the connector. Please contact factory for further advice.
4. Refer to the catalogue for part number breakdown.
5. This document covers different accessory type.
See the next page for variant types and reference views.
6. Tooling supplied separate.

List of Process Documents used in this PI

List of Tools used in this PI

	Strap Wrench (torque setting)
294GB-5063-XX	90° Pin Contact Tightening
294GB-5064-XX	90° Skt Contact Tightening
294GB-5065-XX	Castellated Jam Nut Tightening
294GB-5066-XX	90° Skt Contact (legacy) Tightening
	XX refers to connector shell size

Release / Changes:	ECN24869	ECN22005	ECN22057	ECN22119	ECN22181	ECN22485	ECN23675
Originator:	I Quinney	J Turnbull	J Turnbull	J Turnbull	J Turnbull	J Turnbull	T Whitnell
Date:	31/01/2020	6/10/14	25/11/14	19/01/15	26/02/15	23/10/15	09/03/18

Amphenol

PROCESS INSTRUCTION

Number: 123GB-0845

Issue: 8

Page:

Print test box



2 of 7



Rhino Connectors

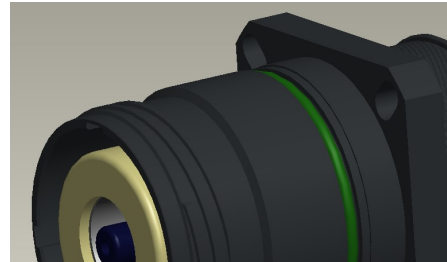
Reference views.

WPTV-00XXXX-XXX-XPXA
Pin variant



General assembled view/s of the assembly, for reference.

WPTV-00XXXX-XXX-XSXA
Socket variant



General assembled view/s of the assembly, for reference.

Reference views.

WPTV-00XXXX-XXX-XPXB
Pin variant



General assembled view/s of the assembly, for reference.

WPTV-00XXXX-XXX-XSXB
Socket variant



General assembled view/s of the assembly, for reference.

Release / Changes:	ECN24869	ECN22005	ECN22057	ECN22119	ECN22181	ECN22485	ECN23675
Originator:	I Quinney	J Turnbull	J Turnbull	J Turnbull	J Turnbull	J Turnbull	T Whitnell
Date:	31/01/2020	6/10/14	25/11/14	19/01/15	26/02/15	23/10/15	09/03/18

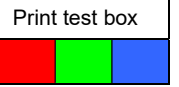
Amphenol

PROCESS INSTRUCTION

Number: 123GB-0845

Issue: 8

Page:



3 of 7

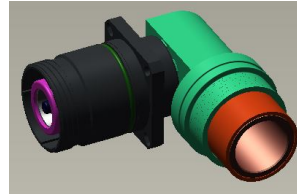
Reference views.

WPTV-00XXXX-XXX-XPXC
Pin variant



General assembled view/s of the assembly, for reference.

WPTV-00XXXX-XXX-XSXC
Socket variant



General assembled view/s of the assembly, for reference.

Release / Changes:	ECN24869	ECN22005	ECN22057	ECN22119	ECN22181	ECN22485	ECN23675
Originator:	I Quinney	J Turnbull	J Turnbull	J Turnbull	J Turnbull	J Turnbull	T Whitnell
Date:	31/01/2020	6/10/14	25/11/14	19/01/15	26/02/15	23/10/15	09/03/18

Amphenol

PROCESS INSTRUCTION

Number: 123GB-0845

Issue: 8

Page:

Print test box



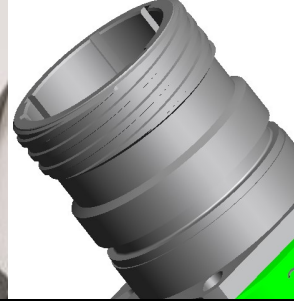
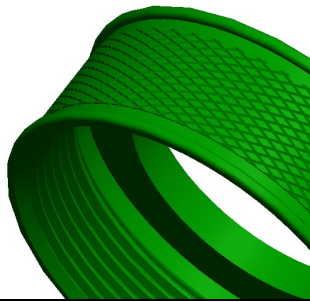
4 of 7

OP 10. Torque Requirements

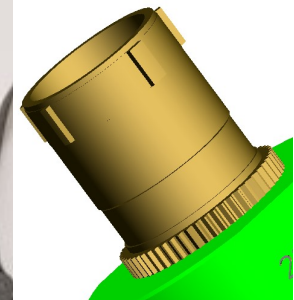
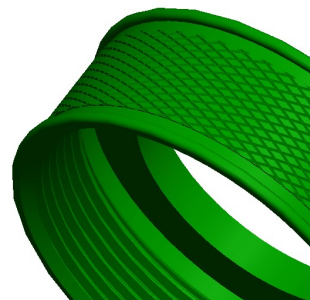
The sections below detail the connector type, situation and relevant torque / tool information for all Rhino Connectors in the standard Product Range

**OP 11a. Plug (all styles / genders) Plain Backshell.
WPTV-06xxXX-XXX-XxXA variant.**

Part Numbers	Tools		Torque Value
WPTV-06xx13-85-XxXA	Strap Wrench	294GB-5069-13-X	12.2 Nm
WPTV-06xx15-120-XxXA	Strap Wrench	294GB-5069-15-X	13.1 Nm
WPTV-06xx17-185-XxXA	Strap Wrench	294GB-5069-17-X	13.1 Nm
WPTV-06xx21-340-XxXA	Strap Wrench	294GB-5069-21-X	15.4 Nm
WPTV-06xx23-500-XxXA	Strap Wrench	294GB-5069-23-X	15.4 Nm
WPTV-06xx25-1000-XxXA	Strap Wrench	294GB-5069-25-X	15.4 Nm

**OP 11b. Rec (all styles / genders) Plain Backshell
WPTV-XXxxXX-XXX-XxXA variant.**

Part Numbers	Tools		Torque Value
WPTV-XXxx13-85-XxXA	Strap Wrench	294GB-5070-13-X	12.2 Nm
WPTV-XXxx15-120-XxXA	Strap Wrench	294GB-5070-15-X	13.1 Nm
WPTV-XXxx17-185-XxXA	Strap Wrench	294GB-5070-17-X	13.1 Nm
WPTV-XXxx21-340-XxXA	Strap Wrench	294GB-5070-21-X	15.4 Nm
WPTV-XXxx23-500-XxXA	Strap Wrench	294GB-5070-23-X	15.4 Nm
WPTV-XXxx25-1000-XxXA	Strap Wrench	294GB-5070-25-X	15.4 Nm



Release / Changes:	ECN24869	ECN22005	ECN22057	ECN22119	ECN22181	ECN22485	ECN23675
Originator:	I Quinney	J Turnbull	J Turnbull	J Turnbull	J Turnbull	J Turnbull	T Whitnell
Date:	31/01/2020	6/10/14	25/11/14	19/01/15	26/02/15	23/10/15	09/03/18

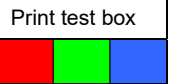
Amphenol

PROCESS INSTRUCTION

Number: 123GB-0845

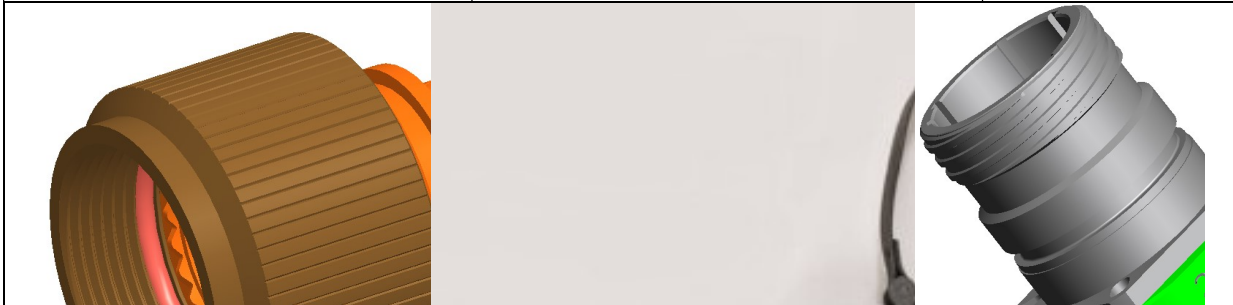
Issue: 8

Page:

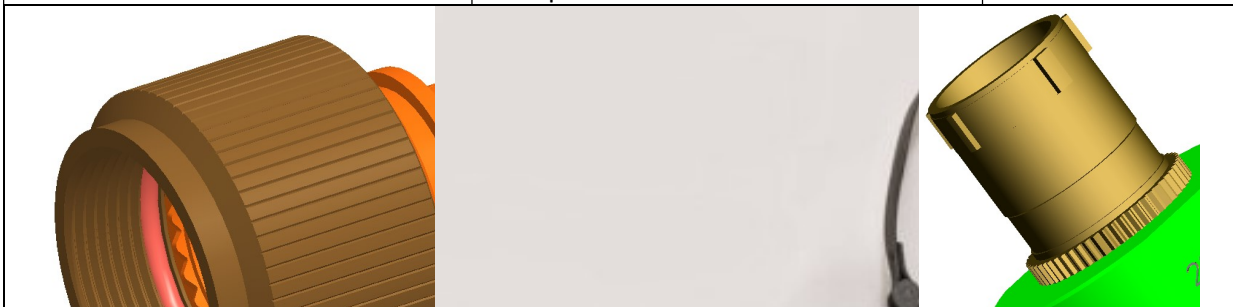


5 of 7

OP 12a. Plug (all styles / genders) Straight Backshell WPTV-06xxXX-XXX-XxXB variant.			
Part Numbers	Tools		Torque Value
WPTV-06xx13-85-XxXB	Strap Wrench	294GB-5069-13-X	12.2 Nm
WPTV-06xx15-120-XxXB	Strap Wrench	294GB-5069-15-X	13.1 Nm
WPTV-06xx17-185-XxXB	Strap Wrench	294GB-5069-17-X	13.1 Nm
WPTV-06xx21-340-XxXB	Strap Wrench	294GB-5069-21-X	15.4 Nm
WPTV-06xx23-500-XxXB	Strap Wrench	294GB-5069-23-X	15.4 Nm
WPTV-06xx25-1000-XxXB	Strap Wrench	294GB-5069-25-X	15.4 Nm



OP 12b. Rec (all styles / genders) Straight Backshell WPTV-XXxxXX-XXX-XxXB variant.			
Part Numbers	Tools		Torque Value
WPTV-XXxx13-85-XxXB	Strap Wrench	294GB-5070-13-X	12.2 Nm
WPTV-XXxx15-120-XxXB	Strap Wrench	294GB-5070-15-X	13.1 Nm
WPTV-XXxx17-185-XxXB	Strap Wrench	294GB-5070-17-X	13.1 Nm
WPTV-XXxx21-340-XxXB	Strap Wrench	294GB-5070-21-X	15.4 Nm
WPTV-XXxx23-500-XxXB	Strap Wrench	294GB-5070-23-X	15.4 Nm
WPTV-XXxx25-1000-XxXB	Strap Wrench	294GB-5070-25-X	15.4 Nm



Release / Changes:	ECN24869	ECN22005	ECN22057	ECN22119	ECN22181	ECN22485	ECN23675
Originator:	I Quinney	J Turnbull	J Turnbull	J Turnbull	J Turnbull	J Turnbull	T Whitnell
Date:	31/01/2020	6/10/14	25/11/14	19/01/15	26/02/15	23/10/15	09/03/18

Amphenol**PROCESS INSTRUCTION**

Number: 123GB-0845

Issue: 8

Page:

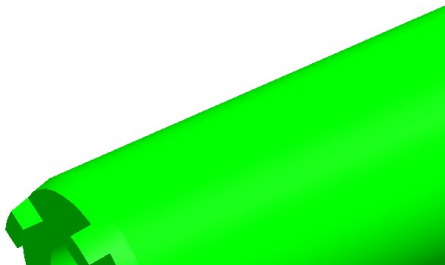
Print test box



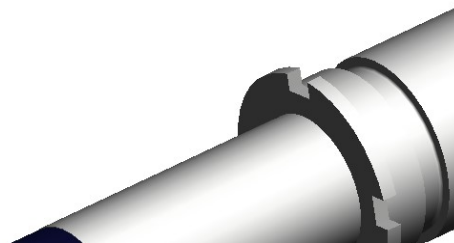
6 of 7

**OP 13. Rec and Plug (all styles) 90° Backshell Pin
WPTV-XXxxXX-XXX-XPXC variant.**

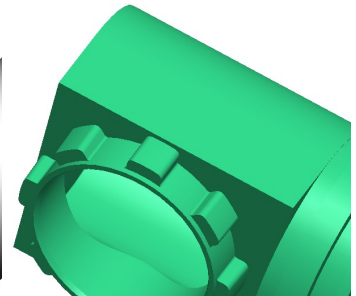
Part Numbers	Tool	Torque Value (Min)	Torque Value (Max)
WPTV-XXxx13-85-XPXC	294GB-5063-13	1.1 Nm	1.9 Nm
WPTV-XXxx15-120-XPXC	294GB-5063-15	3.7 Nm	6.6 Nm
WPTV-XXxx17-185-XPXC	294GB-5063-17	9 Nm	16.2 Nm
WPTV-XXxx21-340-XPXC	294GB-5063-21	17.5 Nm	32.1 Nm
WPTV-XXxx23-500-XPXC	294GB-5063-23	30 Nm	55.7 Nm
WPTV-XXxx25-1000-XPXC	294GB-5063-25	30 Nm	55.7 Nm



Tool



Contact



Backshell

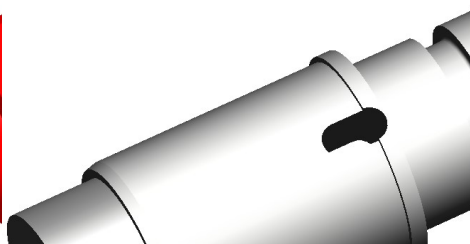
Apply axial load when tightening to specified torque. Ensure tool castellations remain engaged with contact.

**OP 14. Rec and Plug (all styles) 90° Backshell Skt, Current Design
WPTV-XXxxXX-XXX-XSXC variant.**

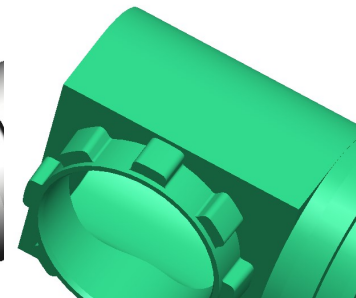
Part Numbers	Tool	Torque Value (MIN)	Torque Value (MAX)
WPTV-XXxx13-85-XSXC	294GB-5064-13	1.1 Nm	1.9 Nm
WPTV-XXxx15-120-XSXC	294GB-5064-15	3.7 Nm	6.6 Nm
WPTV-XXxx17-185-XSXC	294GB-5064-17	9 Nm	16.2 Nm
WPTV-XXxx21-340-XSXC	294GB-5064-21	17.5 Nm	32.1 Nm
WPTV-XXxx23-500-XSXC	294GB-5064-23	30 Nm	55.7 Nm
WPTV-XXxx25-1000-XSXC	294GB-5064-25	30 Nm	55.7 Nm



Tool



Contact



Backshell

Apply axial load when tightening to specified torque. Ensure tool castellations remain engaged with contact.

Release / Changes:	ECN24869	ECN22005	ECN22057	ECN22119	ECN22181	ECN22485	ECN23675
Originator:	I Quinney	J Turnbull	J Turnbull	J Turnbull	J Turnbull	J Turnbull	T Whitnell
Date:	31/01/2020	6/10/14	25/11/14	19/01/15	26/02/15	23/10/15	09/03/18

Amphenol


PROCESS INSTRUCTION

Number: 123GB-0845

Issue: 8

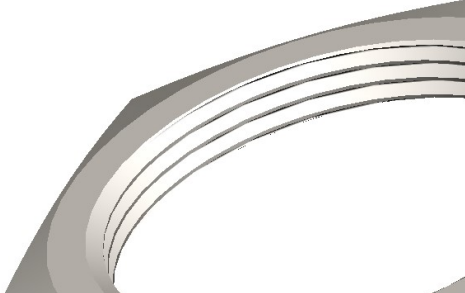
Page:

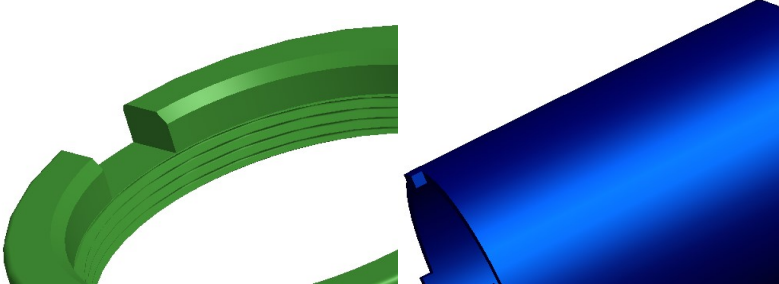
Print test box



7 of 7

OP 15.	
Intentionally Left Blank	

OP 16.	Rec and Plug (all styles / genders) Jam-Nut WPTV-07xxXX-XXX-XxXx variant.	
Part Numbers	Tool	Torque Value
WPTV-07xx13-85-XxXx	Customer standard tooling for Jam-Nut assembly e.g. box spanner / torque wrench etc.	6.2/6.8 Nm
WPTV-07xx15-120-XxXx		7.9/8.5 Nm
WPTV-07xx17-185-XxXx		9.0/9.6 Nm
WPTV-07xx21-340-XxXx		11.3/12.4 Nm
WPTV-07xx23-500-XxXx		12.4/13.6 Nm
WPTV-07xx25-1000-XxXx		13.6/14.7 Nm
		

OP 17.	Rec and Plug (all styles / genders) Castellated Nut WPTV-07xxXX-XXX-XxX(W587) variant.	
Part Numbers	Tool	Torque Value
WPTV-07xx13-85-XxXx(W587)	294GB-5065-13	6.2/6.8 Nm
WPTV-07xx15-120-XxXx(W587)	294GB-5065-15	7.9/8.5 Nm
WPTV-07xx17-185-XxXx(W587)	294GB-5065-17	9.0/9.6 Nm
WPTV-07xx21-340-XxXx(W587)	294GB-5065-21	11.3/12.4 Nm
WPTV-07xx23-500-XxXx(W587)	294GB-5065-23	12.4/13.6 Nm
WPTV-07xx25-1000-XxXx(W587)	294GB-5065-25	13.6/14.7 Nm
		
Apply axial load when tightening to specified torque. Ensure tool castellations remain engaged with nut.		

Release / Changes:	ECN24869	ECN22005	ECN22057	ECN22119	ECN22181	ECN22485	ECN23675
Originator:	I Quinney	J Turnbull	J Turnbull	J Turnbull	J Turnbull	J Turnbull	T Whitnell
Date:	31/01/2020	6/10/14	25/11/14	19/01/15	26/02/15	23/10/15	09/03/18